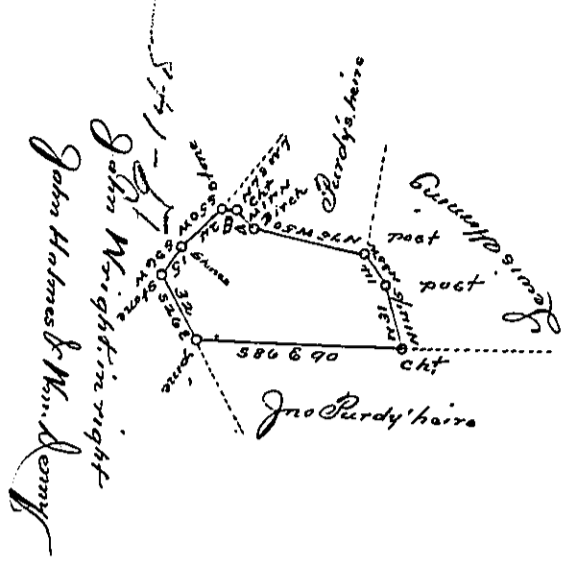
 Cabin in which people were living & small spot of land cultivated

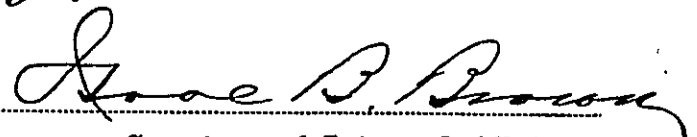


A Draft of twenty five acres and twenty nine perches of land with six per Cent for Roads situate in Fermanagh township in Mifflin County surveyed 7th April 1815 in pursuance of a warrant to Samuel Myers dated 3^d February 1814.

Michael M. Morahan

To Richard T. Leech Esquire
Surveyor General of Pennsylvania

IN TESTIMONY that the above is a copy of the original remaining on file in the Department of Internal Affairs of Pennsylvania, made conformably to an Act of Assembly approved the 16th day of February, 1833, I have hereunto set my Hand and caused the Seal of said Department to be affixed at Harrisburg, this day of April 1895,


Secretary of Internal Affairs.